



Grays Point

5 4 2

Architect designed and master built brick family residence large enough for two families enjoying spectacular water views over the serene Mansion Bay. Located opposite beautiful park with children's playground.

This family home is made for entertaining and a terrific lifestyle. Features 5 huge bedrooms, lounge with fire place, separate dining, eat in kitchen plus rumpus room. Huge double garage plus plenty of parking.

The waterfront has a jetty, pontoon and deep water for any size boat. Land size 1488m².

Type : House

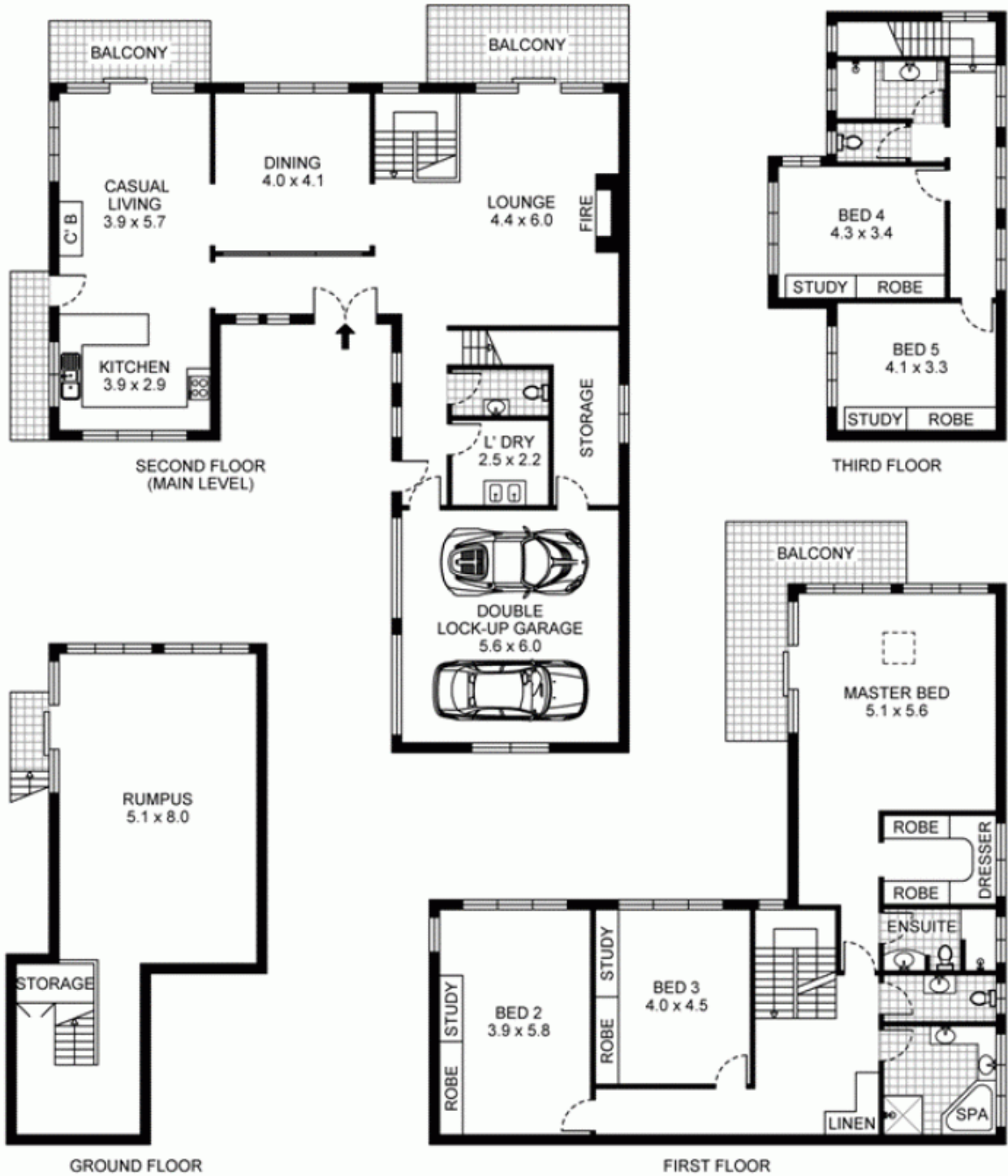
View : <https://www.burraneer.com.au/sale/nsw/sutherland/grays-point/residential/house/5719466>



Stuart Payne
02 9523 8333



Adam Payne
02 9523 8333



54 Mansion Point Road, Grays Point

PLEASE NOTE:
THIS PLAN HAS BEEN PROVIDED BY REALPHOTO FOR
MARKETING PURPOSES ONLY. NO RELIANCE SHOULD
BE PLACED ON THIS PLAN FOR CONSTRUCTION OR
DEMOLITION PURPOSES. REALPHOTO 0405 682 225
WWW.REALPHOTO.NET.AU

